

Youth Risk Behavior Survey

Orange County High Schools, 2021

Lesbian, Gay & Bisexual (LGB) Youth

The 2021 Youth Risk Behavior Survey (YRBS) was completed by 1,441 students in 22 public high schools in Orange County during the fall of 2021. The school response rate was 100%, the student response rate was 70%, and the overall response rate was 70%. The results are representative of all students in grades 9-12. The weighted demographic characteristics of the sample are as follows:

Female	49.8%	9th grade	26.1%	Asian	4.0%
Male	50.2%	10th grade	26.4%	Black	24.4%
		11th grade	24.3%	Hispanic/Latino	42.7%
		12th grade	23.1%	White	25.2%
		Other	0.2%	All other races	1.0%
				Multiple races	2.6%

Lesbian, Gay or Bisexual	19.1%	Other or Questioning	9.4%		
Female	24.7%	Female	13.0%		
Male	12.8%	Male	4.9%		
Transgender	10.9%	Transgender	13.3%		

Students completed a self-administered, anonymous, 92-item questionnaire. Survey procedures were designed to protect the privacy of students by allowing for anonymous and voluntary participation. Local parental permission procedures were followed before survey administration.

The survey measured behaviors in six separate categories:

Behaviors that contribute to unintentional injuries and violence;

Sexual behaviors that contribute to unintended pregnancy and sexually transmitted diseases, including HIV infection;

Alcohol and other drug use;

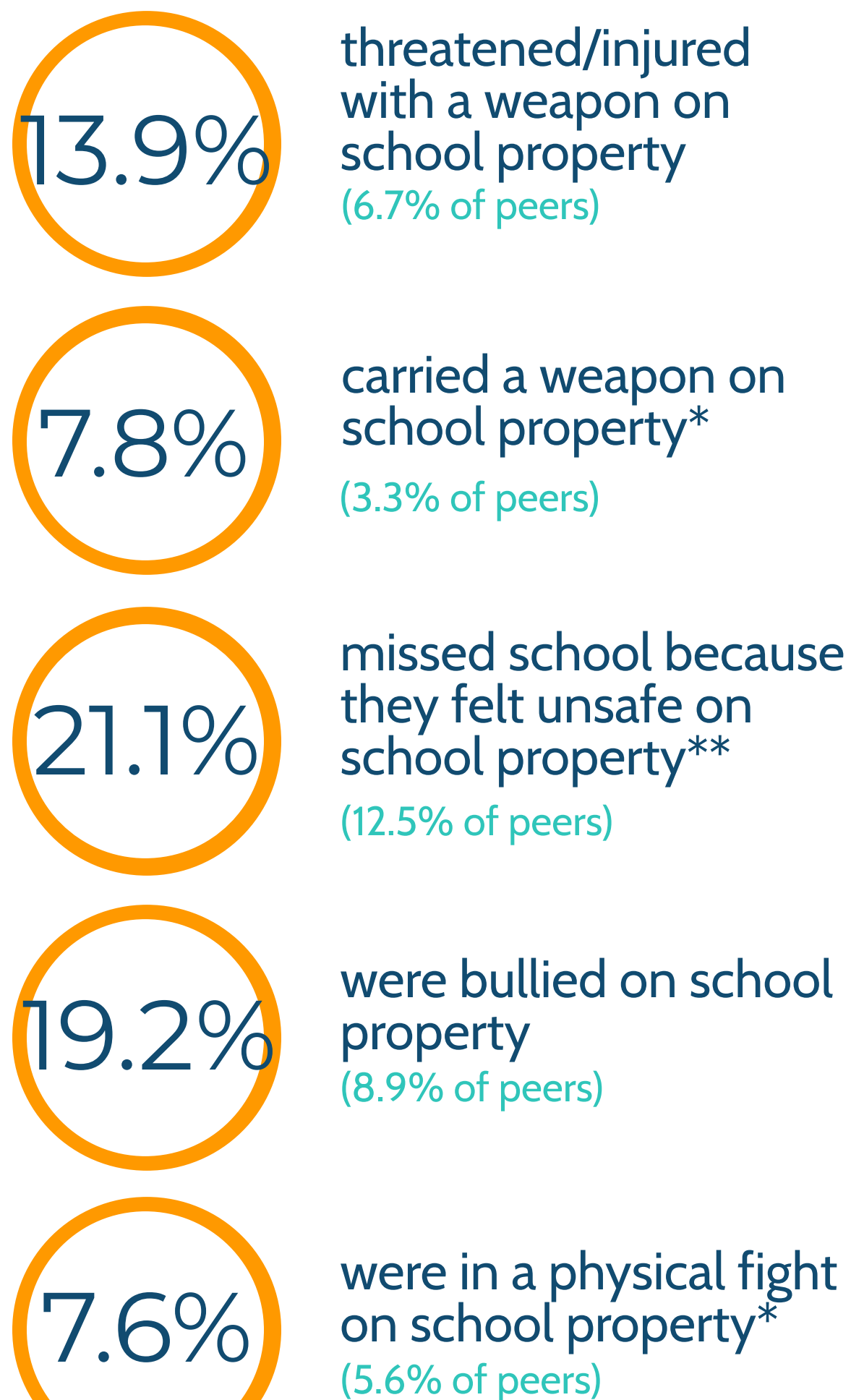
Tobacco use;

Unhealthy dietary behaviors; and

Inadequate physical activity.

Unintentional Injury & Violence

Weapons & Safety on School Property for LGB Respondents



*during the previous 12 months
**or on their way to/from school

Behavior

Behavior	LGB	Peers
didn't always wear a seat belt (as passenger)	50.5	44.9
rode with a driver who'd been drinking*	21.4	12.9
drove a car after drinking alcohol*	7.2	2.0
texted or e-mailed while driving*	35.7	30.4
carried a gun	8.8	5.6
forced to have sexual intercourse	18.9	7.8
were in a physical fight	20.7	17.8
electronically bullied	21.1	9.9
witnessed fight/shooting/stabbing in their neighborhood	27.8	19.9

* at least once within the prev. 30 days

Across a majority of behaviors surveyed in this area, LGB students reported significantly ($p = 0.05$) higher rates of behaviors than their heterosexual peers. LGB students were more likely to experience violence and bullying on school property, and possibly in response, were also more likely to carry a weapon on school property. LGB students were also 2-3 times more likely than their peers to experience violence with someone they were dating.

Violent Experiences & Sexual Activity

LGB		Peers
28.2%	SEXUAL VIOLENCE (being forced by anyone to do sexual things that they did not want to)	10.5%
11.7%	SEXUAL DATING VIOLENCE (being forced by someone they were dating to do sexual things that they did not want to)	5.3%
12.1%	PHYSICAL DATING VIOLENCE (being physically hurt on purpose by someone they were dating)	5.3%

Higher rates of bullying, on school property (+10%) and electronically (+11%), correlate to higher rates of suicidal ideation among LGB students. Compared to 34% of peers, 63% of LGB students reported experiencing extended periods of sadness/hopelessness. More than 2 in 5 LGB students considered attempting suicide, while 23% actually attempted suicide; 8% of which required medical treatment as a result.

63.4%
felt sad or hopeless,
daily, for 2+ weeks

44.5%
seriously considered
attempting suicide

> 1 in 5
attempted suicide

Alcohol, Tobacco & Other Drug Use

Current Use* (%) by LGB Youth

Current use of alcohol, marijuana, and e-Vapor products was significantly more likely ($p = 0.05$) among LGB students than their peers. While cigarette use among LGB students was nearly triple that of their peers, at 6.3%, cigarettes were significantly less prevalent than e-Vapor products, which have current use rates of 18.2% and 9.4% among LGB and heterosexual students, respectively.

30.9

Alcohol
(13.7% peers)

25.0

Marijuana
(8% peers)

18.2

e-Vapor Products
(9.4% peers)

6.3

Cigarettes
(1.2% peers)

Behaviors - Current

	LGB	Peers
<i>used electronic vapor products frequently**</i>	6.3	2.4
<i>used electronic vapor products daily</i>	2.2	1.8
<i>used smokeless tobacco</i>	6.1	1.6
<i>smoked cigars</i>	6.8	1.3
<i>smoked cigarettes or cigars</i>	7.3	2
<i>smoked cigarettes or cigars or used smokeless tobacco</i>	8.2	2.2
<i>smoked cigarettes or cigars or used smokeless tobacco or electronic vapor products</i>	18.3	10
<i>smoked cigarettes or used electronic vapor products</i>	18.1	9.9
<i>binge drinking (4-5 drinks within a couple hours)</i>	10.6	5
<i>drank 10 or more drinks in a row</i>	0.9	0.7

Nearly half (43.2%) of LGB students and one third (29%) of peers reported using e-Vapor products at least once in their lives. Other substances, such as prescription pain medications, cocaine and ecstasy, were 2.5-5 times more likely to have been tried by LGB students, than their peers. Initial exposure to these substances among LGB students may result in higher rates of addiction or dependence in adulthood.

Ever Used (%) by LGB Youth

43.2

e-Vapor Products
(29% peers)

38.9

Marijuana
(18.8% peers)

28.3

Rxn Pain Meds***
(9.7% peers)

20.2

Cigarettes
(9.9% peers)

Behaviors - Ever

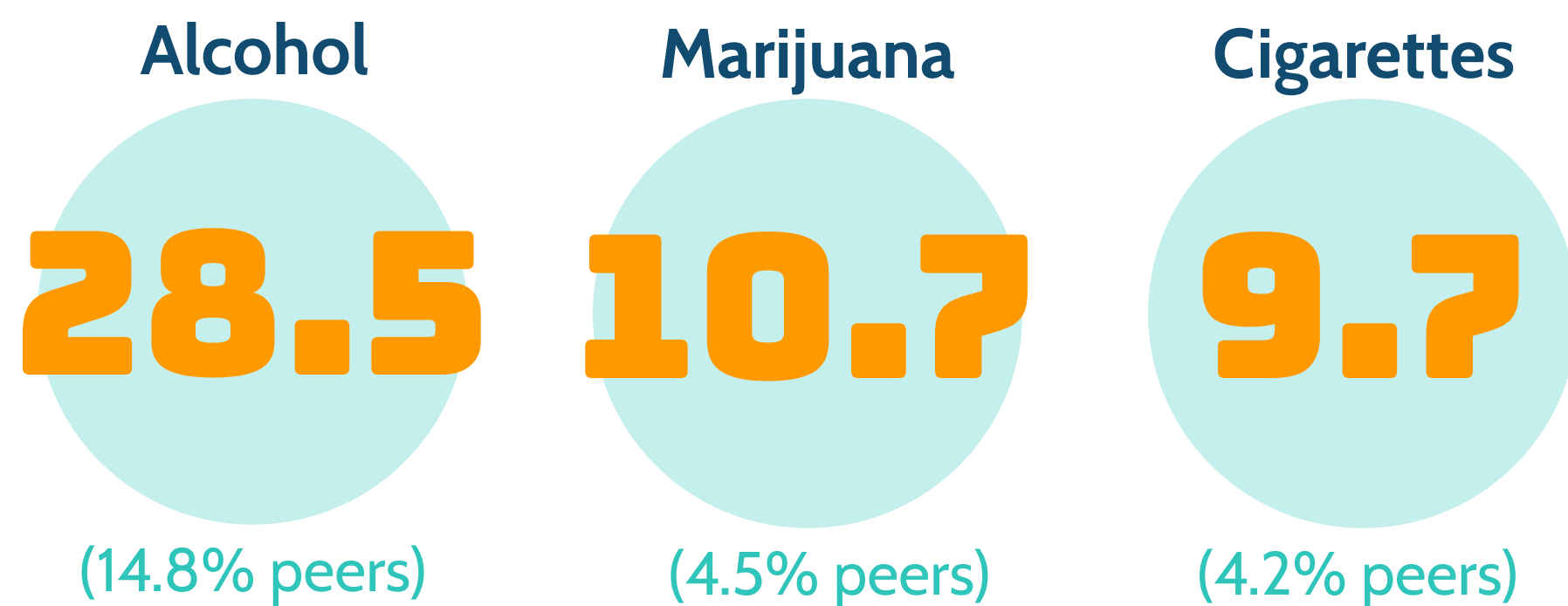
	LGB	Peers
<i>used synthetic marijuana</i>	17.4	4.8
<i>used cocaine</i>	9.5	2.1
<i>used inhalants to get high</i>	14.6	5.7
<i>used heroin</i>	7.6	1.5
<i>used methamphetamines</i>	9.1	1.7
<i>used ecstasy</i>	10.9	2.5
<i>injected any illegal drug</i>	5.8	1.8

* at least once within the prev. 30 days

** on 20+ of the prev. 30 days

***without a doctor's prescription

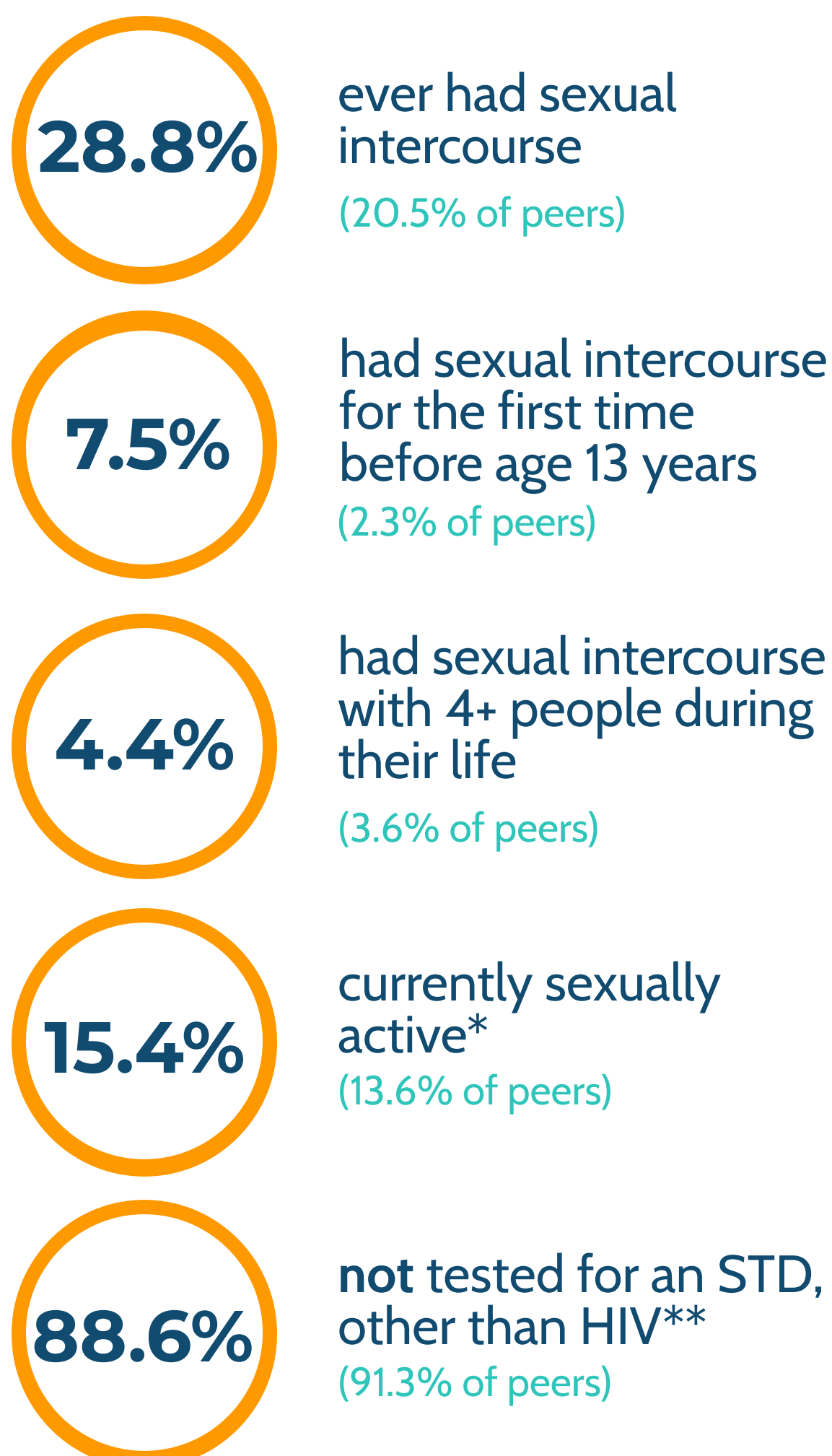
First Use before Age 13 Years (%)



In addition to overall higher usage rates, LGB students were also more likely to report using alcohol, marijuana and cigarettes at younger ages than their heterosexual peers. For all three substances, first use before age 13 years by LGB students was approximately twice the level reported by their peers.

Sexual Behaviors

Among LGB Respondents (% among peers)



* with at least 1 person during the previous 3 months
** during the previous 12 months

When considering sexual behaviors, LGB students were also more likely than their peers to have ever had sexual intercourse (+8.3%), to have had sexual intercourse before the age of 13 years (+5.2%), and to have had sexual intercourse with four or more partners (+0.8%). LGB students were also more likely to report being currently sexually active (+1.8%) and LESS likely to have been tested for STDs (-2.7%).

Behavior*	Peers
<i>drank alcohol or used drugs before last sexual intercourse</i>	16.1
<i>did not use a condom during last sexual intercourse</i>	39.6
<i>did not use birth control pills before last sexual intercourse**</i>	79.1
<i>did not use an IUD or implant before last sexual intercourse**</i>	96.3
<i>did not use birth control pills; an IUD or implant; or a shot, patch, or birth control ring before last sexual encounter**</i>	74.5
<i>did not use both a condom before and birth control pills; an IUD or implant; or a shot, patch, or birth control ring before last sexual encounter**</i>	87.3
<i>did not use any method to prevent pregnancy during last sexual intercourse**</i>	15.1

*data not available for LGB respondents due to fewer than 30 students in the subgroup
**with an opposite-sex partner

Taken as a whole, across survey areas, LGB students were more likely than their heterosexual peers to engage in behaviors that can have long-term, negative effects on their health and well-being and underscores their vulnerability as a population within schools.

Dietary Behaviors

HAD OBESITY
(at or above 95th percentile for body mass index)

16.7%

(14.1% peers)

WERE OVERWEIGHT
(between 85th & 95th percentile for body mass index)

16.7%

(16.3% peers)

* during the previous 7 days

Behavior*	LGB	Peers
<i>described themselves as slightly or very overweight</i>	37	23
<i>were not trying to lose weight</i>	47.6	60.3
<i>did not drink fruit juice</i>	36.2	31.6
<i>did not eat fruit</i>	17.3	20
<i>did not eat fruit or drink 100% fruit juice</i>	7	10.1
<i>did not eat green salad</i>	47.9	50.6
<i>did not eat potatoes</i>	43.5	46.3
<i>did not eat carrots</i>	58.7	60.9
<i>did not eat other vegetables</i>	24.9	25.4
<i>did not eat vegetables (green salad, potatoes [excluding French fries, fried potatoes, or potato chips], carrots, or other vegetables)</i>	12.2	13.2
<i>drank a can, bottle, or glass of soda, 1+ times per day</i>	11.6	9.1
<i>drank a can, bottle, or glass of soda, 2+ times per day</i>	8.3	5
<i>did not drink milk</i>	42.2	38.5
<i>did not eat breakfast</i>	25.9	21.8

Physical Activity

Had No Physical Activity*

LGB		Peers
92.6%	...on all 7 of the previous 7 days	80.5%
77.3%	...on 5 or more of the previous 7 days	59.9%
33.3%	...on at least 1 of the previous 7 days	17.9%

Did Not Attend P.E.**

LGB		Peers
69.3%	...on 1 or more days	63%
87.8%	...on all 5 days	74.5%

* for at least 60 minutes
**during an average school week
***during an average school night

Other Behaviors, Outside of School

72.9%	spend 3+ hours per day on screen time*** (67.5% peers)
70.9%	did not play on at least 1 sports team during the previous 12 months (57.2% peers)
17.8%	had at least 1 concussion from playing sports or physical activity (14% peers)
87.6%	did not get 8+ hours of sleep*** (84.1% peers)

Other Topics

Behavior

LGB

Peers

<i>were not tested for HIV</i>	83.7	90.8
<i>did not see a dentist, during the previous 12 months</i>	39.8	28.8
<i>never saw a dentist</i>	4.1	2.9
<i>usually did not sleep in their parent's or guardian's home</i>	11.3	4.9
<i>are transgender</i>	10.9	0.7
<i>had texted, emailed, or posted electronically a revealing or sexual photo of themselves during the previous 30 days</i>	16.5	7.6
<i>reported a revealing or sexual photo of them had been texted, e-mailed, or posted electronically without their permission, during the previous 30 days</i>	6.3	4.6
<i>have not been taught about AIDS or HIV infection in school</i>	41.7	45.1
<i>strongly disagree, disagree, or are not sure that they feel close to people at their school</i>	41.5	38.9
<i>reported their mental health was most of the time, or always, not good</i>	40.7	22.8
<i>made a plan about how they would attempt suicide</i>	32.3	11.4
<i>did not eat breakfast on all 7 of the previous 7 days</i>	79.9	70.5
<i>were offered, sold, or given an illegal drug on school property</i>	32.7	19

This publication was supported by Grant/Cooperative Agreement number NU87PS004364, funded by the Centers for Disease Control and Prevention. Its contents are solely the responsibility of the authors and do not necessarily represent the official views of the Centers for Disease Control and Prevention or the Department of Health and Human Services.



OCPS EEO Non-Discrimination Statement: The School Board of Orange County, Florida, does not discriminate in admission or access to, or treatment or employment in its programs and activities, on the basis of race, color, religion, age, sex, national origin, marital status, disability, genetic information, sexual orientation, gender identity or expression, or any other reason prohibited by law. The following individuals at the Ronald Blocker Educational Leadership Center, 445 W. Amelia Street, Orlando, Florida 32801, attend to compliance matters: Equal Employment Opportunity (EEO) Officer & Title IX Officer: Keshara Cowans; ADA Coordinator: Jay Cardinali; Section 504 Coordinator: Tajuana Lee-Wenze. (407.317.3200)